

Leach Highway / Abernethy Road Interchange

ABOUT THE PROJECT

Gateway WA Perth Airport and Freight Access Project is the largest infrastructure project ever undertaken by Main Roads WA and aims to improve the safety and efficiency of one of the State's most important transport hubs, where road, rail and air services connect.

The \$1 billion national priority project will create landmark infrastructure around the Perth Airport and the freight and industrial hubs of Kewdale and Forrestfield.

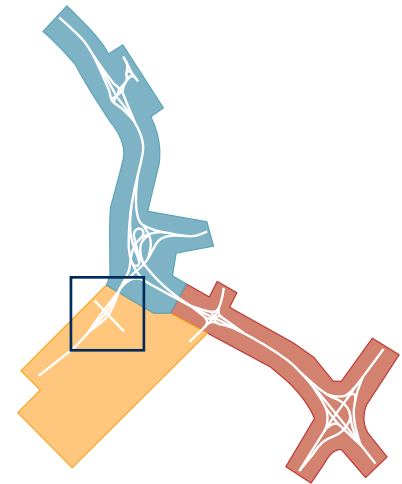
THE NEED TO UPGRADE

The Leach Highway / Abernethy Road intersection experiences congestion as

a result of high volumes of traffic with vehicles travelling to the Perth Airport and heavy vehicles using Leach Highway to access the Kewdale industrial area. The intersection also provides an important connection for local residents and businesses commuting between Belmont and the Kewdale industrial precinct.

THE FUTURE INTERCHANGE

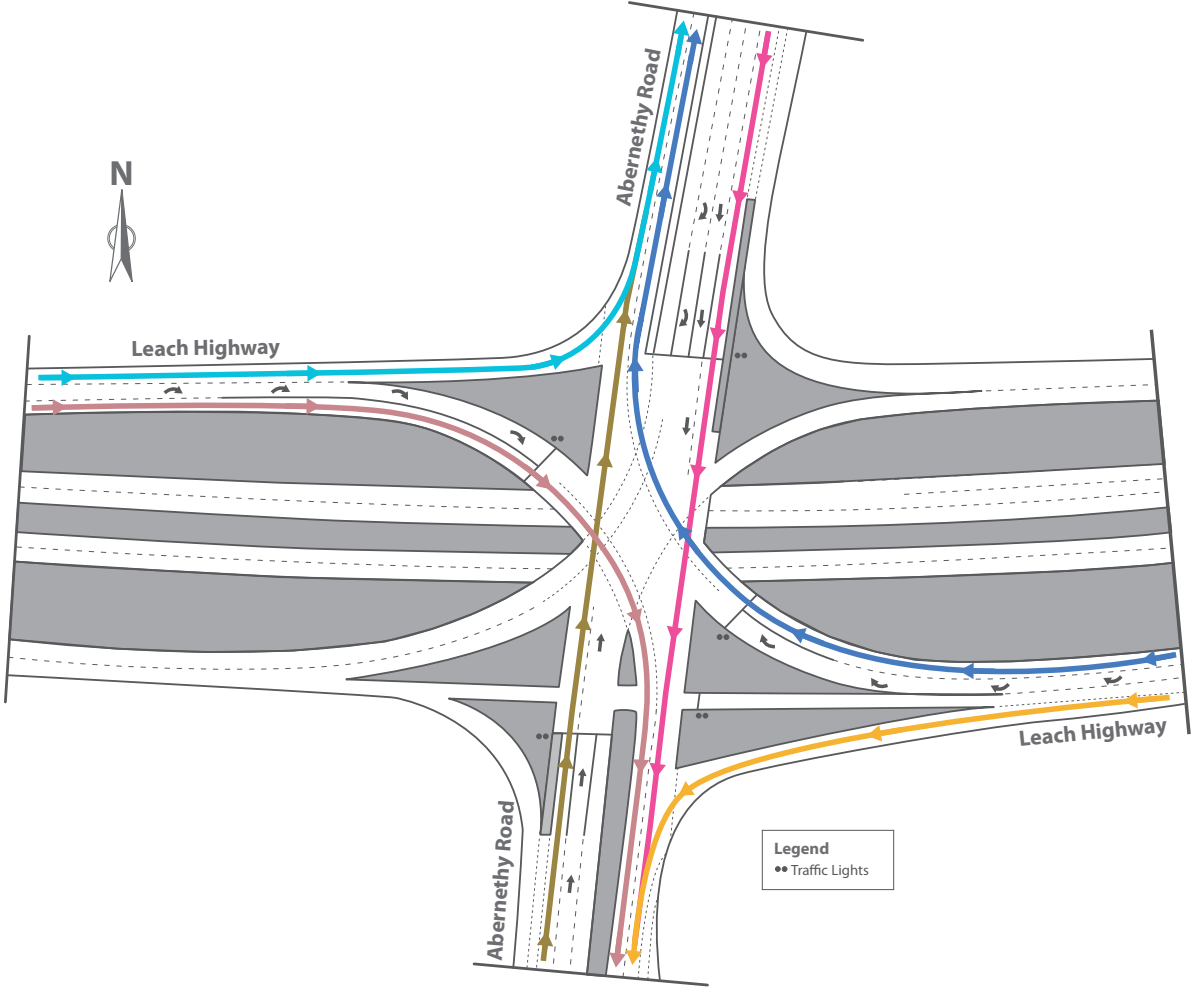
Work commenced on this interchange in mid-2013. This interchange will cater for movement in all directions. It will allow traffic to travel uninterrupted along Leach Highway, under Abernethy Road, and reduce congestion during peak periods.



Artist impression of the new Leach Highway / Abernethy Road grade separated interchange.

LEACH HIGHWAY / ABERNETHY ROAD

NORTHBOUND / SOUTHBOUND MOVEMENTS



Leach Highway eastbound to Abernethy Road northbound

- Movement under the control of give way sign
- 60 km/h

Leach Highway westbound to Abernethy Road northbound

- Movement under the control of traffic signals
- 60 km/h

Abernethy Road northbound

- Movement under the control of traffic signals
- 60km/h

Leach Highway eastbound to Abernethy Road southbound

- Movement under the control of traffic signals
- 60 km/h

Leach Highway westbound to Abernethy Road southbound

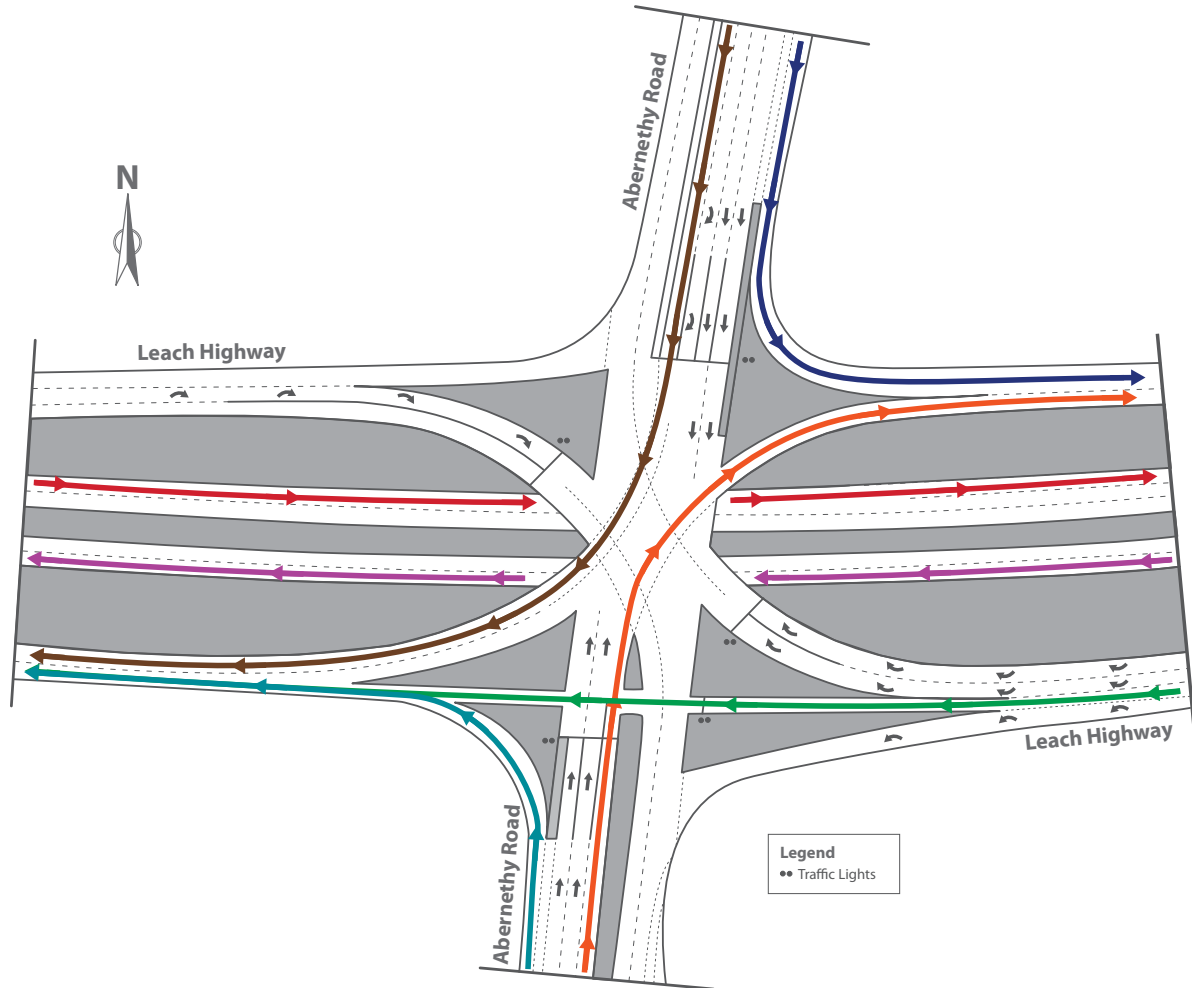
- Movement under the control of give way sign
- 60 km/h

Abernethy Road southbound

- Movement under the control of traffic signals
- 60km/h

ABERNETHY ROAD INTERCHANGE

WESTBOUND / EASTBOUND MOVEMENTS



Leach Highway westbound

- Free flow movement
- 80km/h
- 5.8m clearance
- Shared pedestrian/cyclist path underpass at intersection

Abernethy Road northbound to Leach Highway westbound

- Free flow movement
- 60 km/h

Abernethy Road southbound to Leach Highway westbound

- Movement under the control of traffic signals
- 60 km/h

Leach Highway westbound from Tonkin Highway

- Movement under the control of traffic signals
- 60 km/h

Leach Highway eastbound

- Free flow movement
- 80km/h
- 5.8m clearance
- Shared pedestrian/cyclist path underpass at intersection
- 60 km/h

Abernethy Road southbound to Leach Highway eastbound

- Free flow movement
- 60 km/h

Abernethy Road northbound to Leach Highway eastbound

- Movement under the control of traffic signals
- 60 km/h

Facilities

The project will deliver a number of upgraded and improved facilities, designed to enhance the local area both in function and aesthetics.

NOISE / SCREEN WALLS

As part of the Gateway WA project, approximately seven kilometres of new noise / screen walls will be constructed to help reduce traffic noise to local residential areas located near the Leach Highway, Tonkin Highway and Roe Highway sections of the project.



Artist impression of the residential side of the noise/screen wall. Not to scale.



Artist impression of the roadside of the noise/screen wall. Not to scale.

GERRY ARCHER RESERVE

As part of the upgrade of the Leach Highway / Abernethy Road intersection, the Gerry Archer oval has been realigned to accommodate this essential road network upgrade.

Gateway WA worked with community user groups to develop the design and ensure functionality of the oval was preserved.

This project showcases the commitment of the Federal, State and Local governments as they work together with the community to create a positive legacy.



PEDESTRIAN AND CYCLIST FACILITIES

New Principal Shared Paths will be installed as a part of the Gateway WA project, providing improved facilities for cyclists and pedestrians.

While there may be some disruption to current walking and cycle paths during construction, the new paths will provide improved access for walking and cycling along the new road alignment following construction.

The project will install 21 kilometres of Principal Shared Path adjacent to the new road alignment along Tonkin and Leach Highways, the extension of Leach Highway into Perth Airport (Airport Drive), and Roe Highway.



FURTHER INFORMATION

If you would like to know more about the key features of the project please visit the Gateway WA website at www.gatewaywa.com.au

CONTACT US

If you have a question about the project you are welcome to contact the Gateway WA team on:
Project Information Line: **1800 420 421** or
email: admin@gatewaywa.com.au