

Tonkin Highway / Leach Highway Interchange

ABOUT THE PROJECT

Gateway WA Perth Airport and Freight Access Project is the largest infrastructure project ever undertaken by Main Roads WA and aims to improve the safety and efficiency of one of the State's rail and air services connect.

The \$1 billion national priority project will create landmark road infrastructure around the Perth Airport and the freight and industrial hubs of Kewdale and Forresterfield.

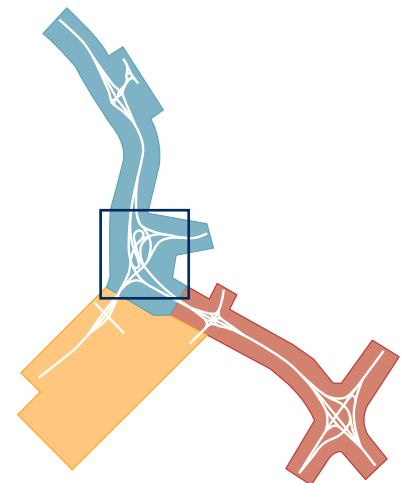
THE NEED TO UPGRADE

The Tonkin Highway / Leach Highway intersection is heavily used by travellers entering and leaving the city of Perth. Heavy congestion is experienced at peak periods, with traffic delays and queuing at the current traffic signals.

THE FUTURE INTERCHANGE

This area includes one of the most prominent design features of the project, the 'Grand Gateway' interchange. The Tonkin Highway / Leach Highway interchange has been designed to create an iconic entrance point to the city of Perth.

Preparatory work commenced for the construction of the new interchange at Tonkin Highway / Leach Highway in mid-2013. This major free-flow interchange will cater for uninterrupted movement in all directions at the interchange and will include a new primary access road to the consolidated airport terminals to improve access for domestic and international travellers.



Artist impression of the 'Grand Gateway' at the interchange of Tonkin Highway / Leach Highway.

TONKIN HIGHWAY / LEACH

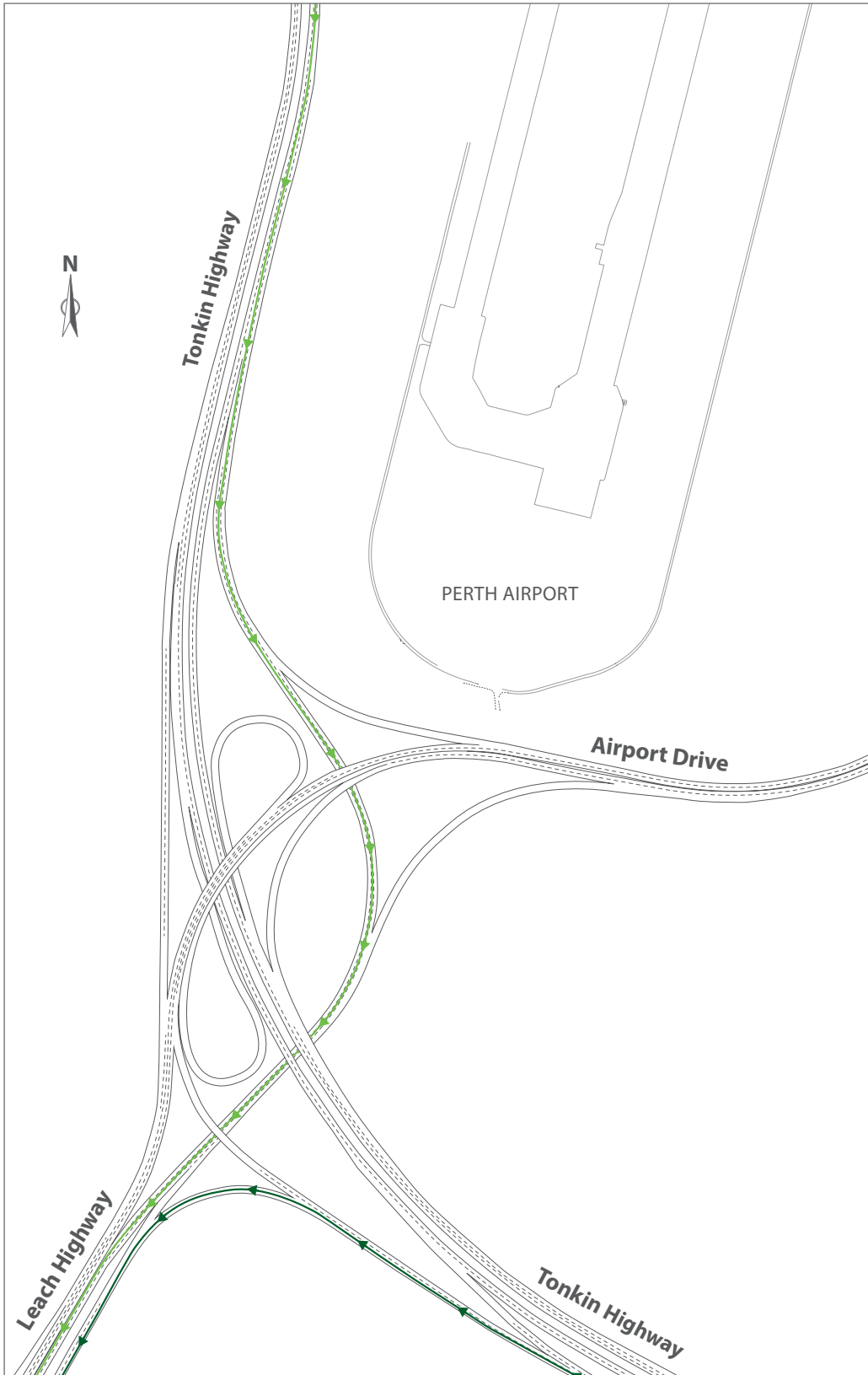
WESTBOUND MOVEMENTS

Tonkin Highway northbound to Leach Highway westbound

- Free flow movement
- 60km/h – 70km/h
- Shared pedestrian / cyclist path

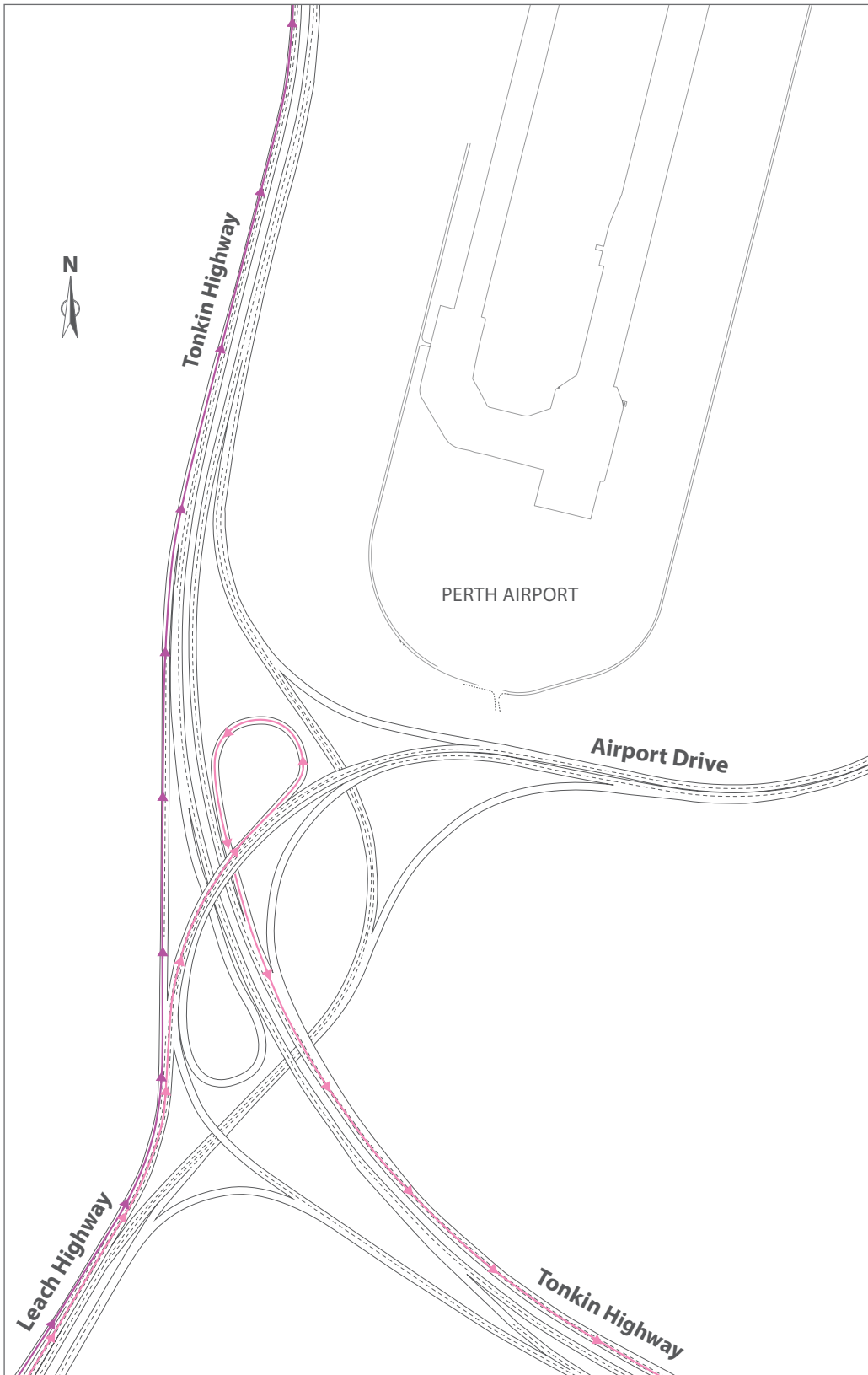
Tonkin Highway southbound to Leach Highway westbound

- Free flow movement
- 80km/h – 100km/h
- 5.4m clearance
- Shared pedestrian / cyclist path



CH HIGHWAY INTERCHANGE

NORTHBOUND AND SOUTHBOUND MOVEMENTS



Leach Highway eastbound to Tonkin Highway southbound

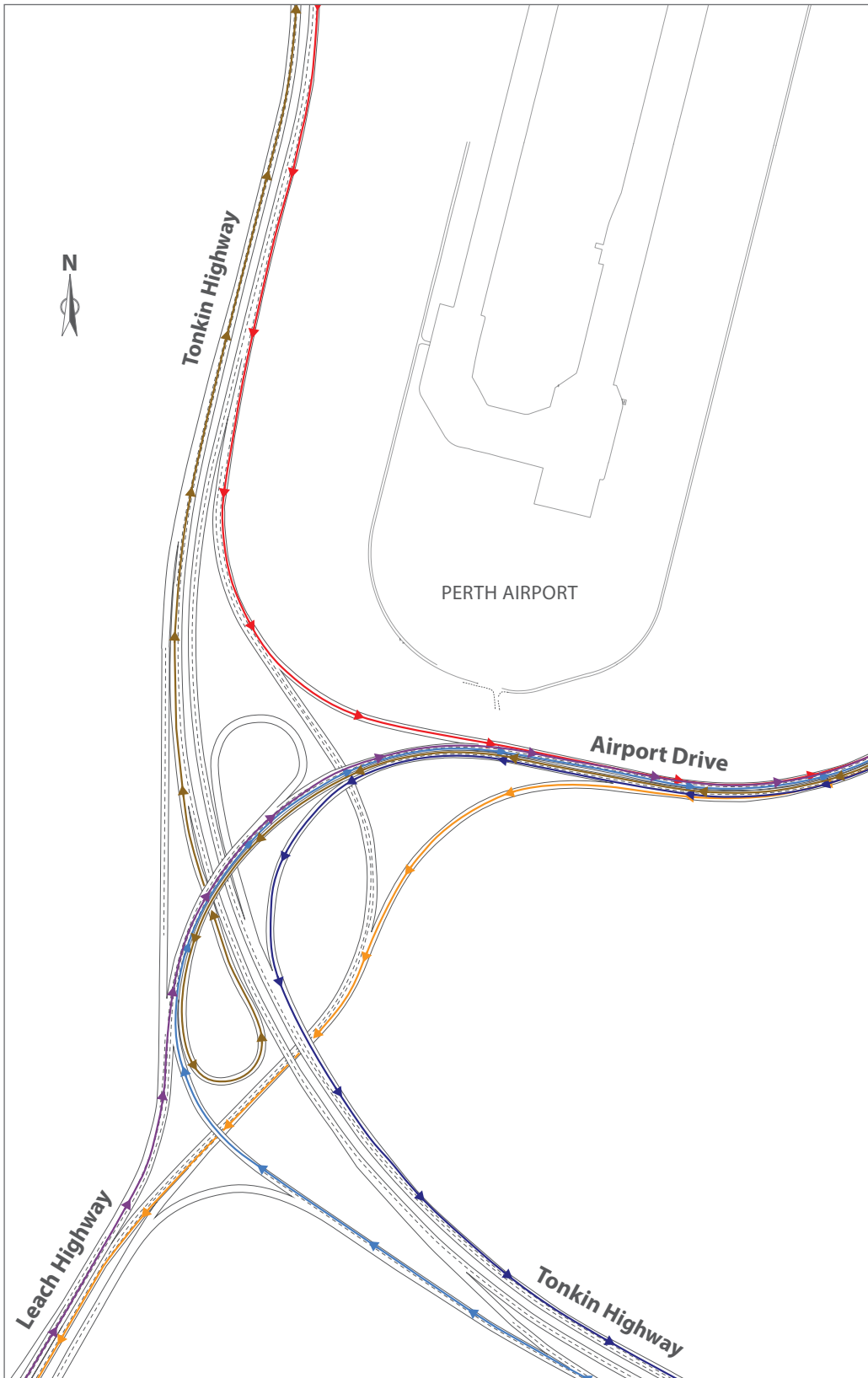
- Free flow movement
- 70km/h – 100km/h
- 6.5m clearance
- Shared pedestrian / cyclist underpass

Leach Highway eastbound to Tonkin Highway northbound

- Free flow movement
- 70km/h – 100km/h
- Shared pedestrian / cyclist underpass

TONKIN HIGHWAY / LEACH HIGHWAY INTERCHANGE

AIRPORT MOVEMENTS



Perth Airport to Leach Highway westbound

- Free flow movement
- 60km/h – 70km/h
- 5.4m clearance
- Shared pedestrian / cyclist underpass

Tonkin Highway northbound to Perth Airport

- Free flow movement
- 70km/h
- Shared pedestrian / cyclist underpass

Tonkin Highway southbound to Perth Airport

- Free flow movement
- 70km/h – 100km/h
- Shared pedestrian / cyclist path

Perth Airport to Tonkin Highway southbound

- Free flow movement
- 70km/h – 100km/h
- Shared pedestrian / cyclist path

Perth Airport to Tonkin Highway northbound

- Free flow movement
- 70km/h – 100km/h
- 6.5m clearance

Leach Highway eastbound to Airport Drive eastbound

- Traffic travels over Tonkin Highway
- Free flow movement

FURTHER INFORMATION

If you would like to know more about the key features of the project please visit the Gateway WA website at www.gatewaywa.com.au

CONTACT US

If you have a question about the project you are welcome to contact the Gateway WA team on:
Project Information Line: **1800 420 421** or
email: admin@gatewaywa.com.au